

 **famileo**
Stay tuned for more fun activities next month!



The winter newsletter

- March 2025 Edition -



summary

Contents:

- Page 3:** Sing The Next Line Quiz
- Page 5:** Parts of a Flower
- Page 6:** Follow the numbers
- Page 7:** Artist impression - Horace Pippin
- Page 9:** Poems - Spring
- Page 10:** Join the dots
- Page 11:** Sudoku
- Page 12:** One & Only
- Page 13:** Top View
- Page 14:** Coloring
- Page 16:** Answers
- Page 23:** Coloring

Coloring



Top view



Sing The Next Line Quiz

Sing the next lines of these songs from the 1960s!

Answers page 17

- 1 Hello darkness, my old friend

- 2 You Don't Own Me

- 3 When you're alone and life is making you lonely

- 4 Listen to the rhythm of the falling rain

- 5 It's My Party

- 6 Moon River, wider than a mile

- 7 I Will Follow You

- 8 I'm Looking Over a Four-Leaf Clover

- 9 Somewhere, Beyond the Sea

- 10 I Go A-Walking After Midnight

Sing The Next Line Quiz

Sing the next lines of these songs from the 1960s!

Answers page 17

11 Here's a Real Nowhere Man

12 There Is a Tavern in the Town, in the Town

13 Oh, I Need Your Love, Babe

14 Shrimp Boats Is A-Coming, Their Sails Are in Sight

15 Forever and Ever, My Heart Will Be True

16 I'm Gonna Buy a Paper Doll That I Can Call My Own

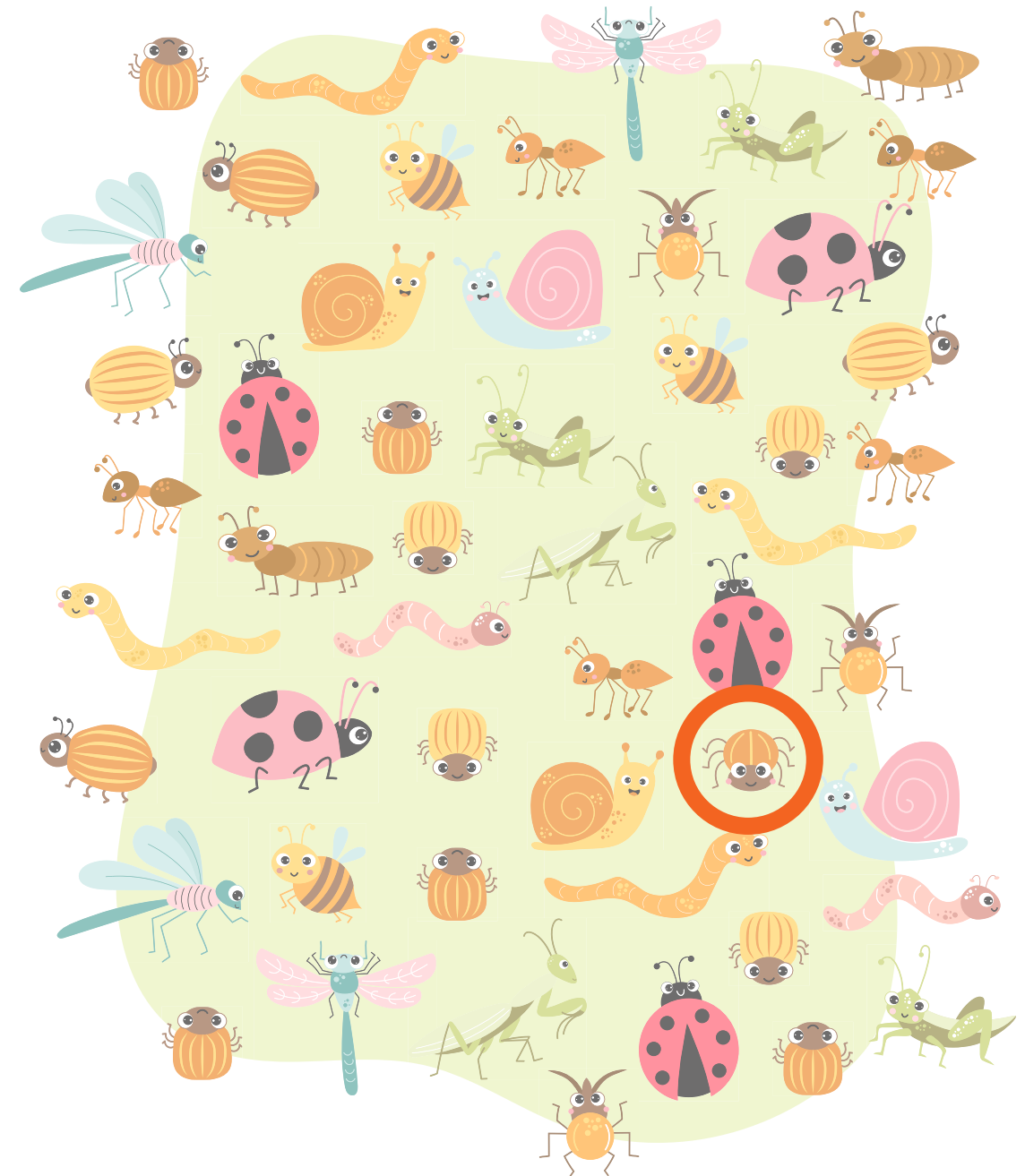
17 The Moment I Wake Up

18 A Long, Long Time Ago, I Can Still Remember How That Music

19 On the Wings of a Snow White Dove

20 We're Caught in a Trap, I Can't Walk Out

One & Only



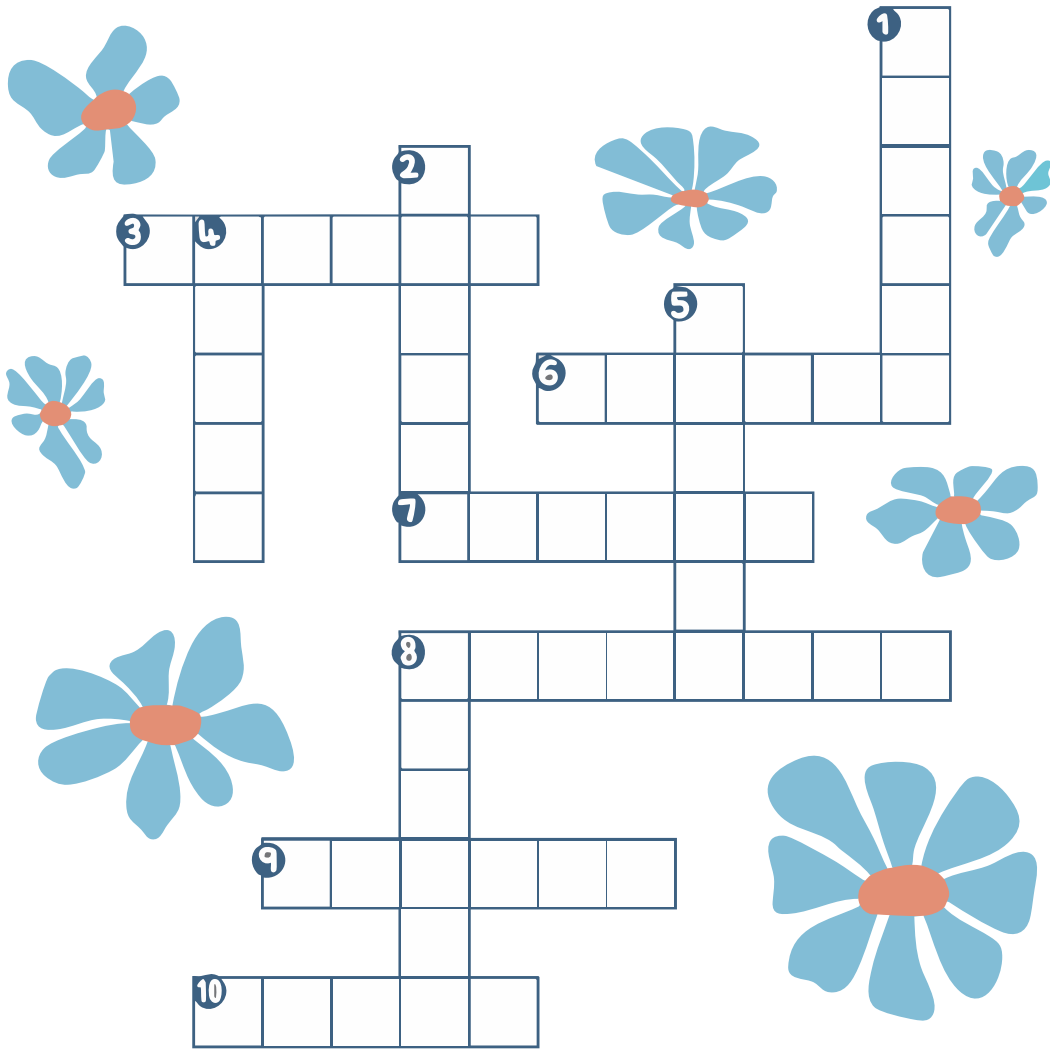
Sudoku

| | | | | | | | | |
|---|---|---|---|---|---|---|---|---|
| 8 | 6 | 5 | 3 | 1 | 4 | 9 | 2 | 7 |
| 4 | 3 | 7 | 9 | 2 | 6 | 8 | 5 | 1 |
| 2 | 1 | 9 | 7 | 8 | 5 | 6 | 3 | 4 |
| 3 | 7 | 2 | 6 | 9 | 8 | 1 | 4 | 5 |
| 1 | 5 | 8 | 4 | 7 | 3 | 2 | 9 | 6 |
| 6 | 9 | 4 | 1 | 5 | 2 | 7 | 8 | 3 |
| 5 | 2 | 3 | 8 | 6 | 7 | 4 | 1 | 9 |
| 9 | 4 | 6 | 2 | 3 | 1 | 5 | 7 | 8 |
| 7 | 8 | 1 | 5 | 4 | 9 | 3 | 6 | 2 |

Parts of a Flower

Flowers have many parts. Some we are more familiar with and some aren't so well-known. See if you can name these parts of flowers.

Answers page 18



DOWN

1. Forms seeds of flower 2. Encases developing bud 4. Where ovules (future seeds) are produced 5. Pollen producing part of a flower 8. Usually located in the center of flower

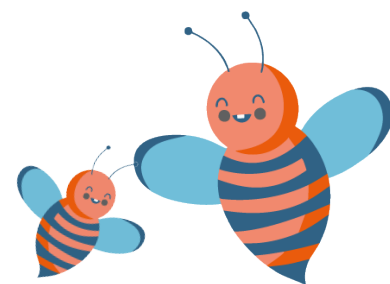
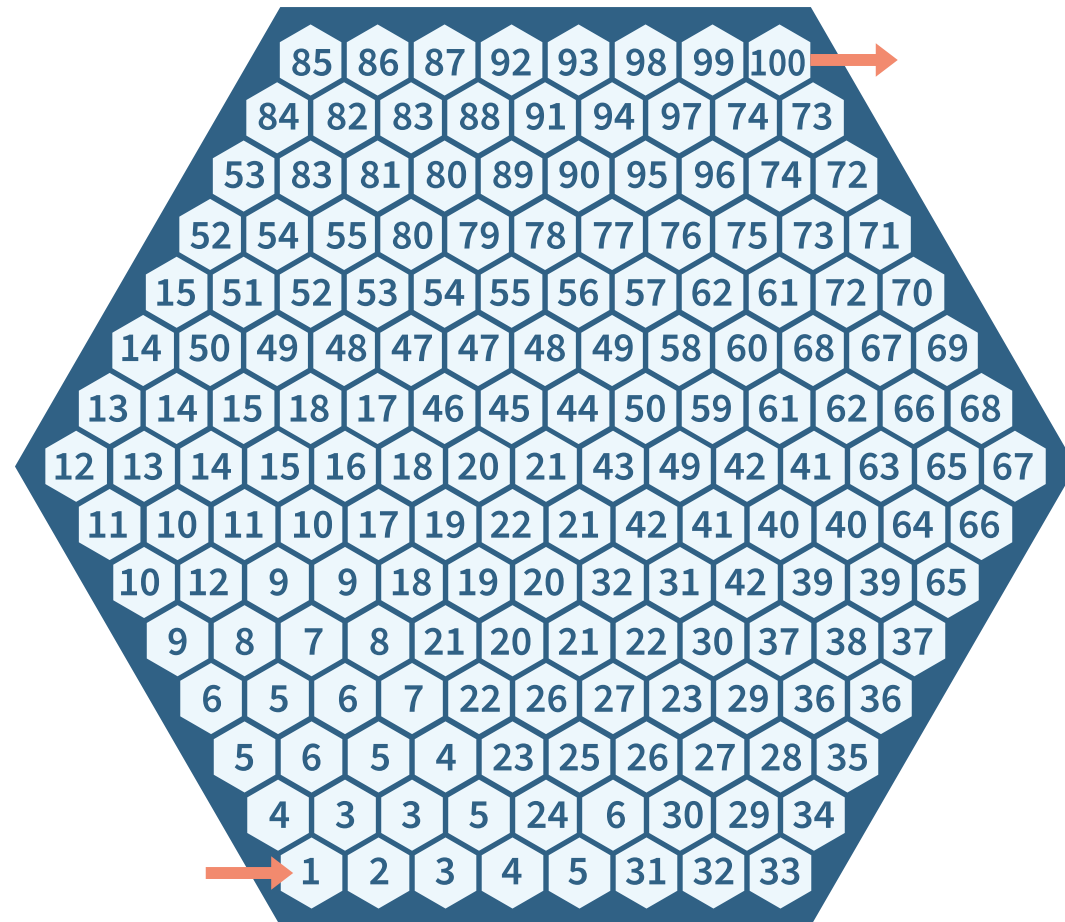
ACROSS

3. Powdery substance instrumental to fertilization of flower 6. Brightly colored parts of flower 7. Where the pollen lands and starts fertilization 8. Stalk of flower 9. Produces and houses pollen 10. Supports the stigma, connecting it to the ovary of the flower

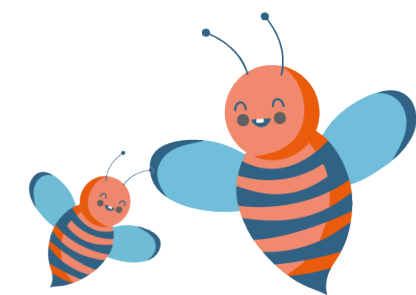
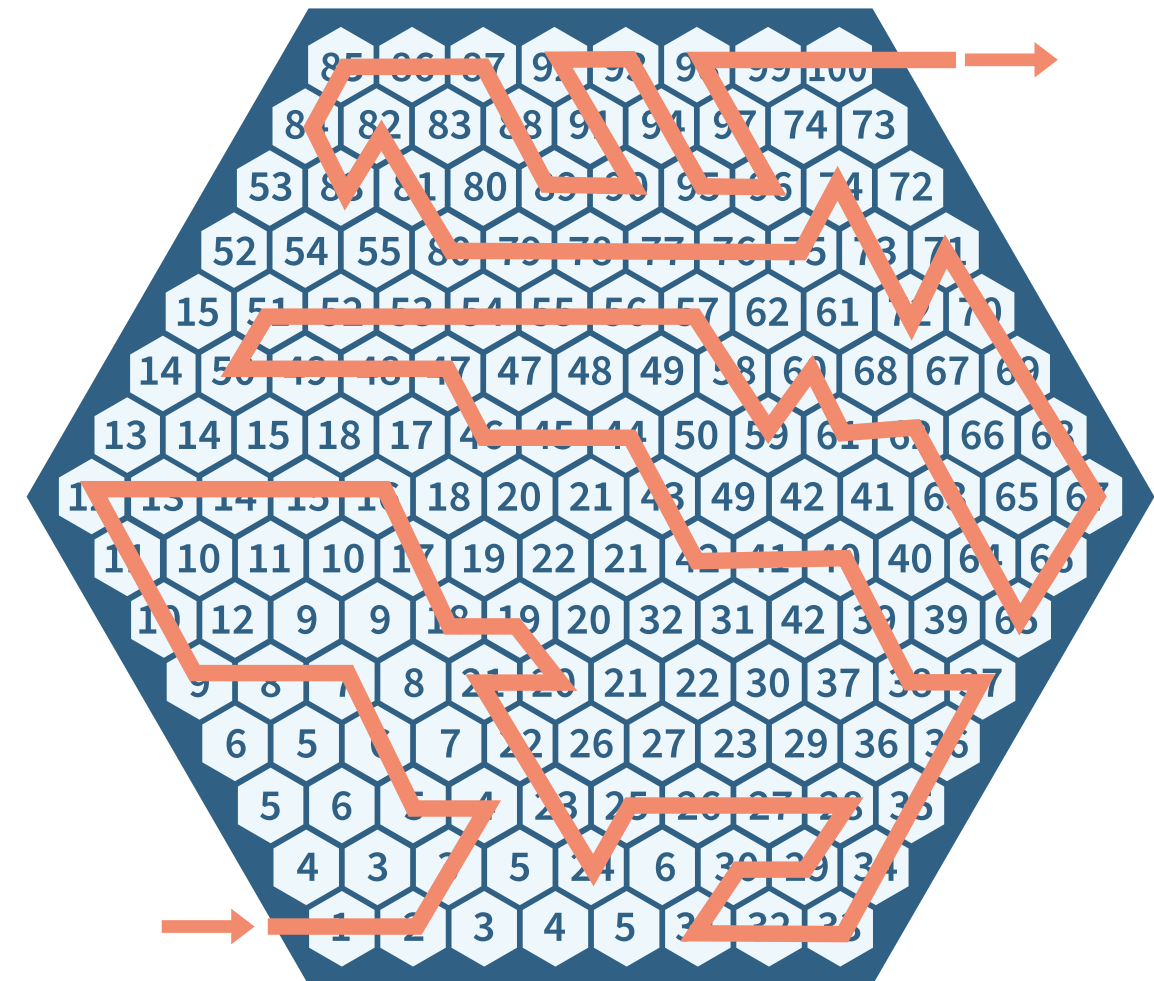
Follow the numbers

Find the path through the honeycomb from 1 - 100

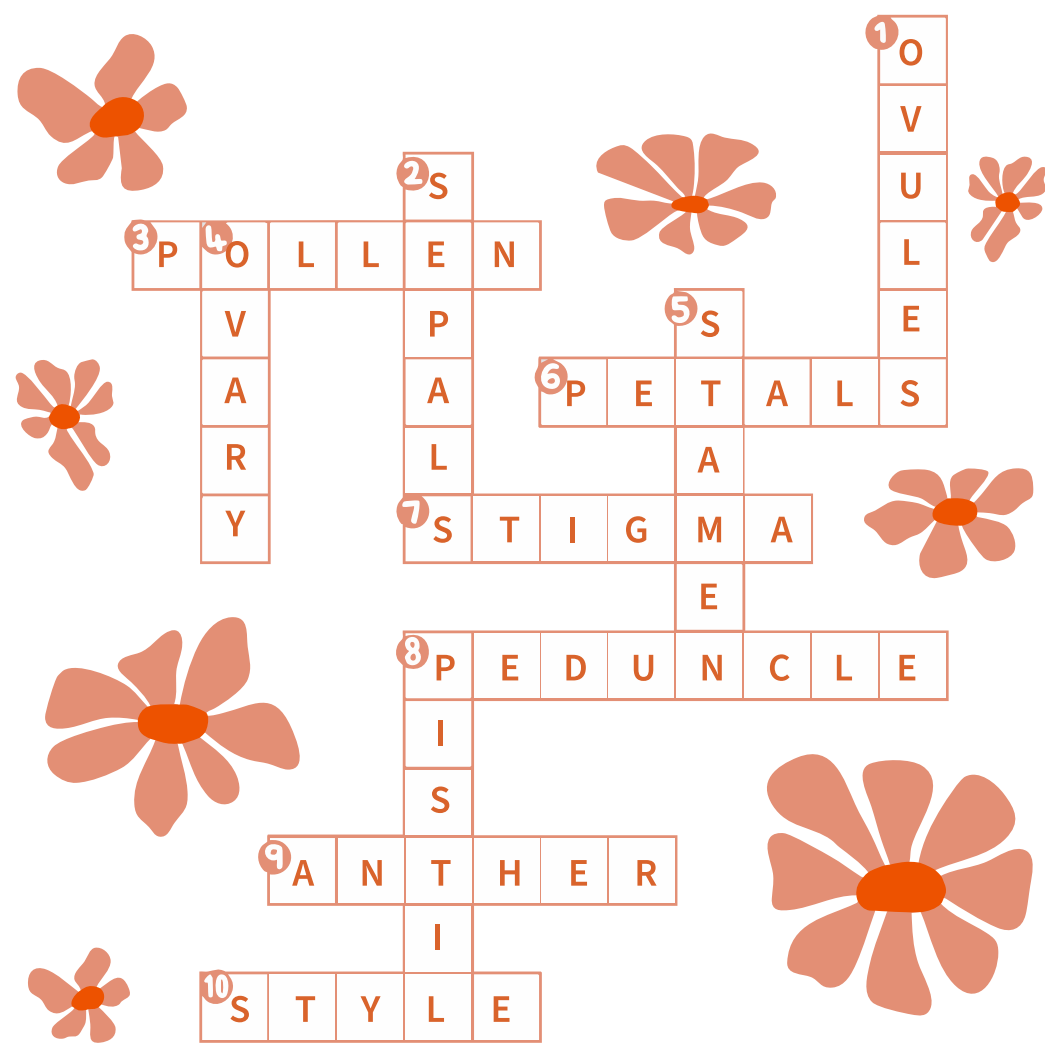
Answers page 19



Follow the numbers



Parts of a Flower



DOWN

1. Forms seeds of flower 2. Encases developing bud 4. Where ovules (future seeds) are produced 5. Pollen producing part of a flower 8. Usually located in the center of flower

ACROSS

3. Powdery substance instrumental to fertilization of flower 6. Brightly colored parts of flower 7. Where the pollen lands and starts fertilization 9. Produces and houses pollen 10. Supports the stigma, connecting it to the ovary of the flower

Artist Impression

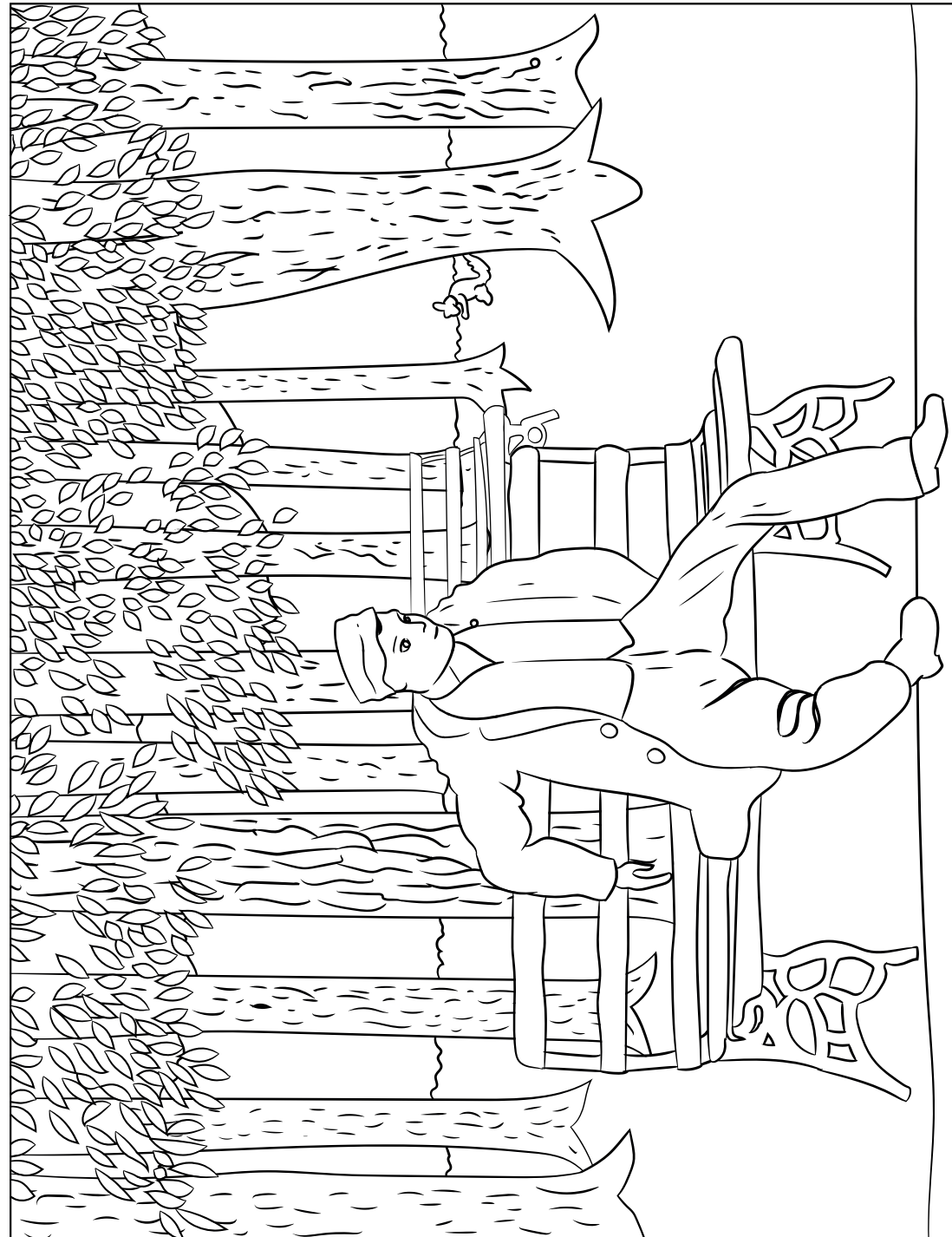
Horace Pippin - The Park Bench



Horace Pippin (1888–1946) was a self-taught American artist known for his paintings inspired by his service in World War I, as well as his depictions of African American life, slavery, and racial segregation. Wounded in the war, he took up painting as part of his rehabilitation, developing a distinctive style that included war scenes, landscapes, portraits, and biblical subjects.

His works, such as The Domino Game (1943) and The Milkman of Goshen (1945), provided an intimate portrayal of everyday African American life, often overlooked by the wider public. He was the first Black artist to be the subject of a monograph, and upon his death, The New York Times hailed him as "the most important Negro painter in America."



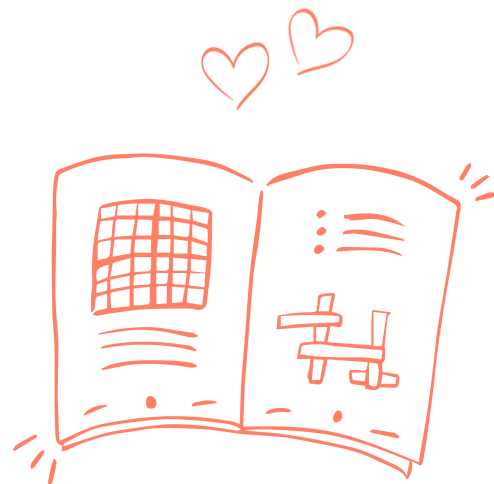


Sing The Next Line Song

1. I've come to talk with you again.... (The Sound of Silence)
2. I'm not just one of your many toys (You Don't Own Me)
3. You can always go downtown (Downtown)
4. Telling me just what a fool I've been (Rhythm of the Falling Rain)
5. And I'll cry if I want to (It's My Party)
6. I'm crossing you in style some day (Moon River)
7. Follow you wherever you may go (I Will Follow You)
8. I overlooked before (Four Leaf Clover)
9. Somewhere waiting for me (Somewhere Beyond The Sea)
10. Out in the moonlight (Walkin' After Midnight)
11. Sitting in his nowhere land (Nowhere Man)
12. And there my dear love sits him down, sits him down (There Is A Tavern In The Town)
13. Guess you know it's true (Eight Days A Week)
14. Shrimp boats is a-comin', There's dancin' tonight (Shrimp Boats)
15. Sweetheart, forever I'll wait for you (Forever and Ever)
16. A doll that other fellows cannot steal (Paper Doll)
17. Before I put on my makeup (I Say a Little Prayer)
18. Used to make me smile (American Pie)
19. He sends his pure sweet love (Wings Of A Dove)
20. Because I love you too much, baby (Suspicious Minds)

Answers

part 1



Poems

Spring – May Denn, John Burrows & Peter Burn

Hush can you hear it?
The rustling in the grass
Bringing you the welcome news
Winter's day is past

Soft, can you feel it?
The warm caressing breeze
Telling you the sticky buds
Are bursting on the trees

Look, Can you see them?
The primrose in the lane,
Now you must believe it

May Denn

When grosbeaks show a damask rose
Amid the cherry blossoms white
And early robins' nests disclose
To loving eye a joyous sight.

John Burrows

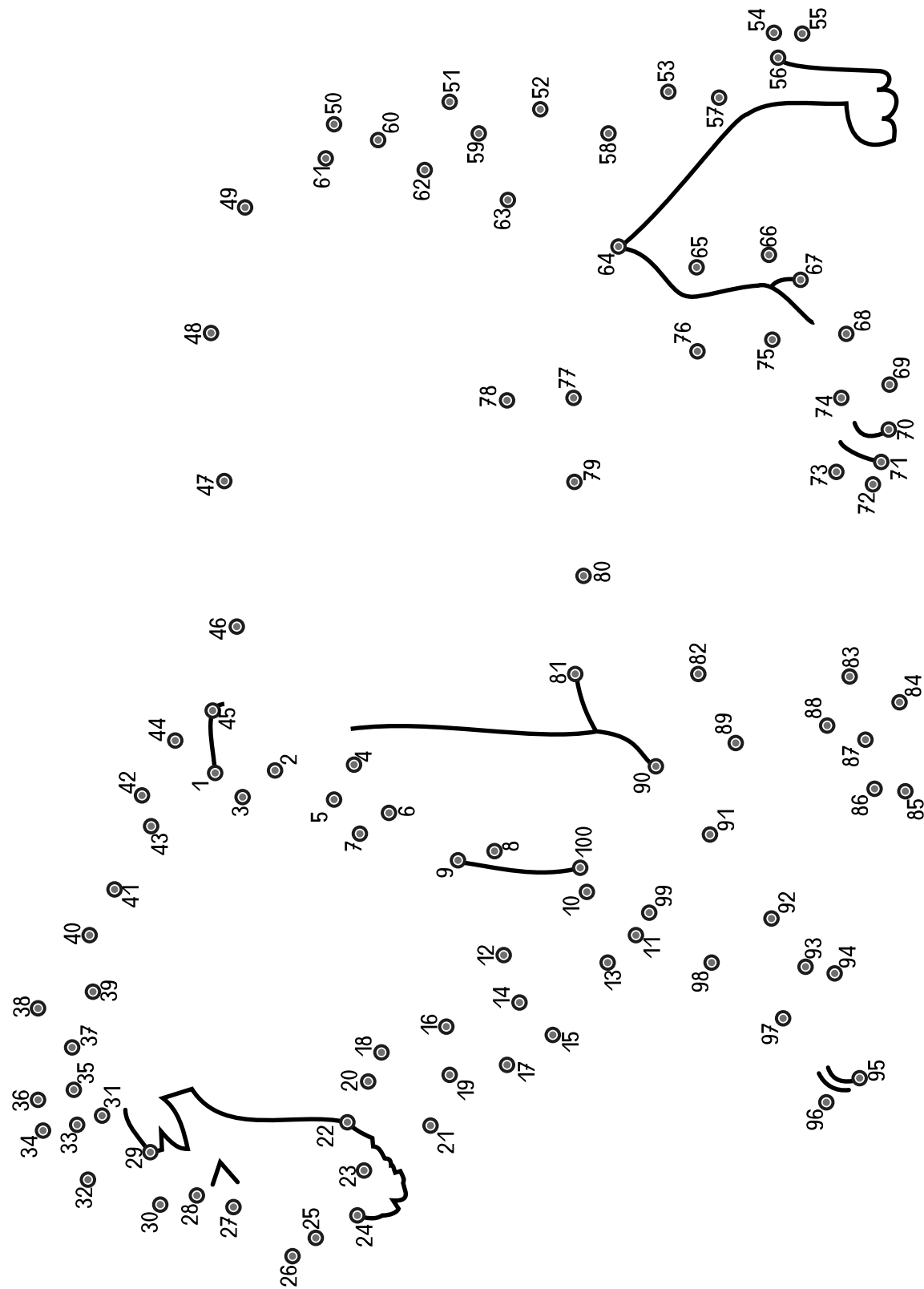
Queens of months, supremely fair
Clothed with garments rich and rare,
None in beauty can compare
March Poems and Verses

Peter Burn

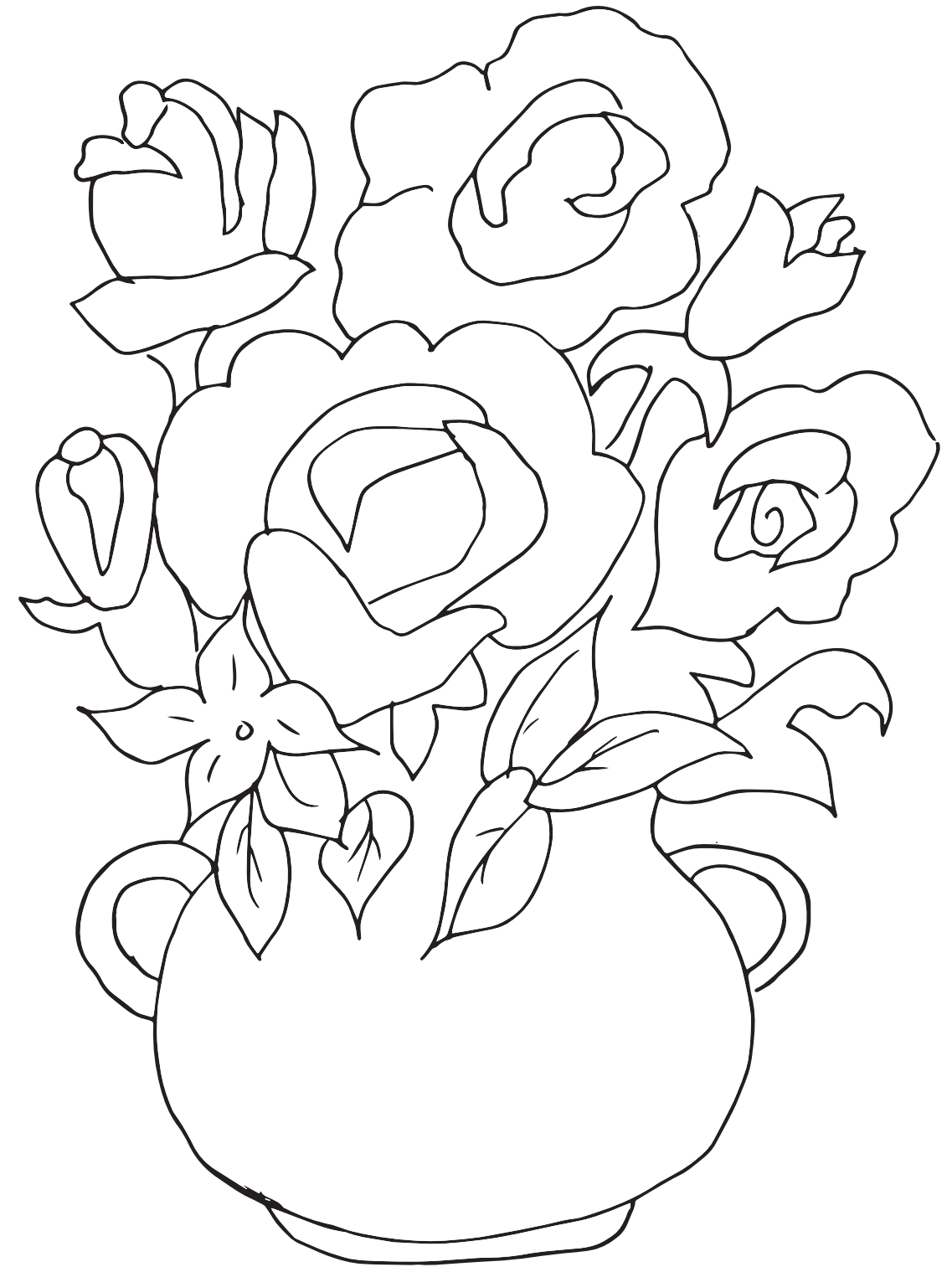


Join the dots

Lion



Coloring



Coloring



Sudoku

Answers page 20

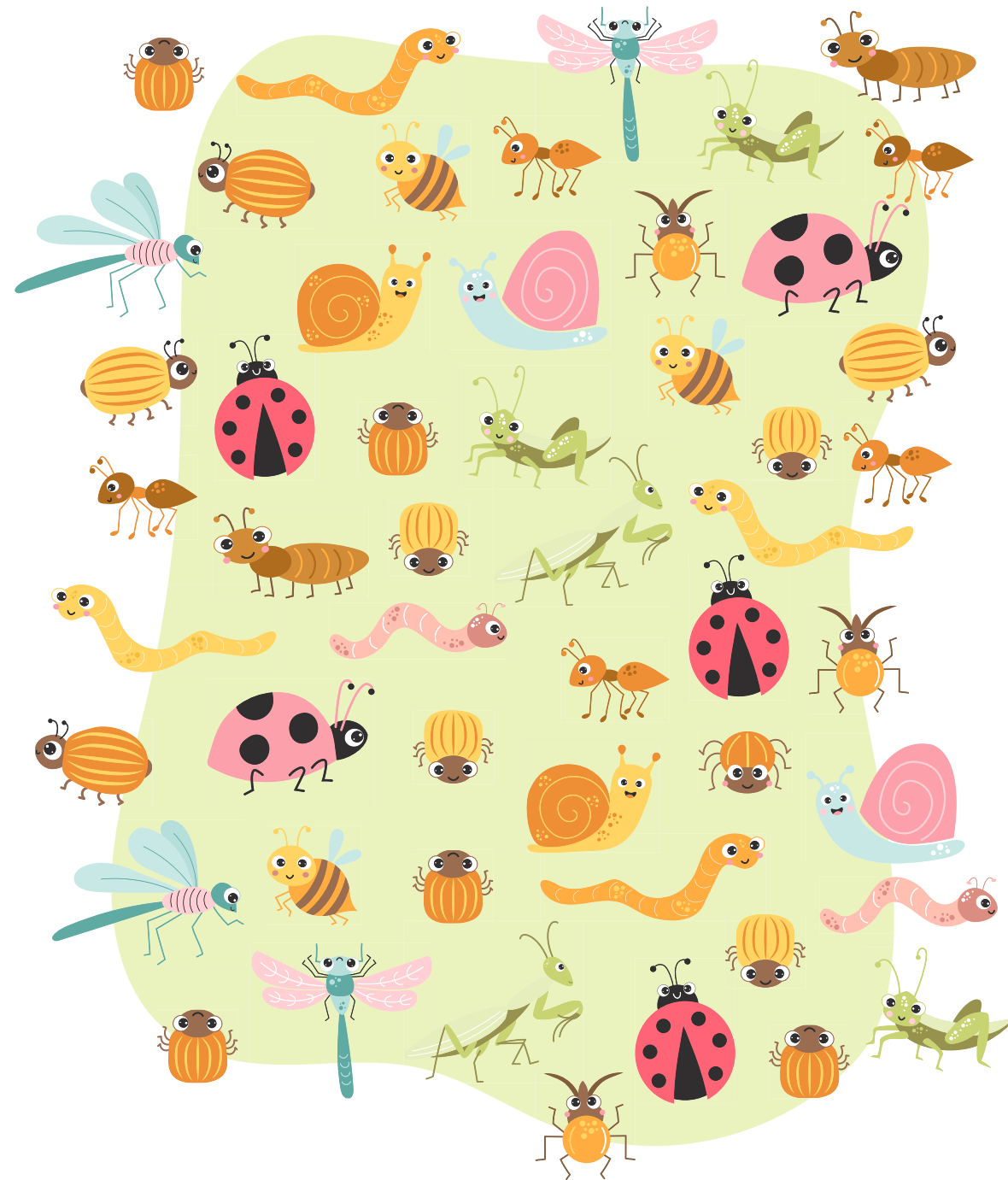
Each row, column, and inner section (9 squares) must be filled with numbers 1 - 9, without repeating any numbers. Numbers already printed may not be changed.

| | | | | | | | | |
|---|---|---|---|---|---|---|---|---|
| | 6 | 5 | 3 | 1 | | 9 | | 7 |
| 4 | | | | | 6 | 8 | | |
| | 1 | 6 | 7 | 8 | | 6 | | 4 |
| 3 | | 2 | | 9 | 8 | | | 5 |
| | | 8 | | | | | | |
| 6 | | 4 | 1 | 5 | | | 8 | |
| 5 | 2 | | 8 | | 7 | | | 9 |
| | | 6 | 2 | 3 | | | 7 | |
| | 8 | | 5 | | 9 | | 6 | |

One & Only

There are more than one of most images below, but one is unique.
Find the unique bunch of flowers that DOES NOT have a match

Answers page 21



Top view

Find the top view of the umbrella

Answers page 22

